

# RS/LB/RL

## RATCHET, REVOLUTION AND DIRECT DRIVE COUNTER

### RATCHET COUNTER

Adds 1 count for each 40 - 45° actuation of lever.

Count Speed: RS-204, RSL-204 Series : 1,000 counts / minute      RS-5 (II), RS-6 (I) : 600 counts / minute  
 RS-4 (I), RS-5 (I), RS-303-5 (I) : 300 counts / minute

### REVOLUTION COUNTER

Adds 1 count for every complete revolution of the shaft.


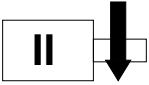
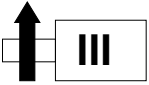
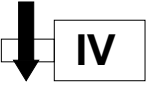
Count Speed: LB-4 (I), LB-5 (I) : 4,000 revolutions / minute

### DIRECT DRIVE COUNTER

Adds 10 counts for every complete revolution (1 count / 1/10 shaft revolution) of the shaft.

Count Speed: RL-4 (I), RL-5 (I) : 400 revolutions / minute      RL-219-5 (I) : 50 revolutions / minute

### COUNT DIRECTION / SHAFT POSITION

			
RIGHT SHAFT TOP GOING	RIGHT SHAFT TOP COMING	LEFT SHAFT TOP GOING	LEFT SHAFT TOP COMING

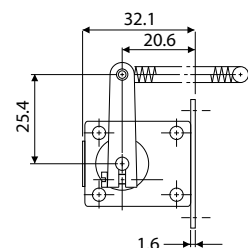
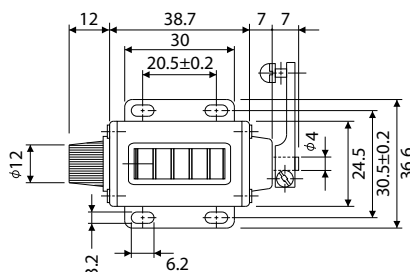
### MODEL SELECTION

TYPE	DIGITS	FIGURES (mm)	WEIGHT(g)	TYPE (I)	TYPE (II)	TYPE (III)	TYPE (IV)
RATCHET	5	4.8 x 2.4	60	RS-204-5 (I)	RS-204-5 (II)	RSL-204-5 (III)	RSL-204-5 (IV)
	4	4.4 x 2.8	50	RS-4 (I)	—	—	—
	5		(I) 50 / (II) 105	RS-5 (I)	RS-5 (II)	—	—
	6		115	RS-6 (I)	—	—	—
	5	6.0 x 4.5	120	RS-303-5 (I)	—	—	—
REVOLUTION	4	4.4 x 2.8	90	LB-4 (I)	—	—	—
	5		100	LB-5 (I)	—	—	—
DIRECT DRIVE	4	4.4 x 2.8	90	RL-4 (I)	—	—	—
	5		100	RL-5 (I)	—	—	—
	5	6.0 x 4.5	110	RL-219-5 (I)	—	—	—

Operating Temperature	-5°C - +40°C	Operating Humidity	85%RH maximum	Remarks	Non-Freezing, Non-Condensing
-----------------------	--------------	--------------------	---------------	---------	------------------------------

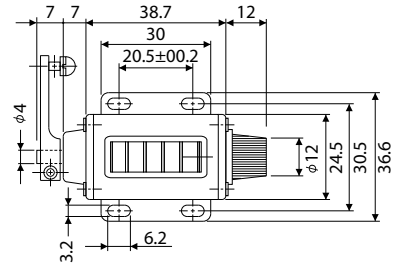
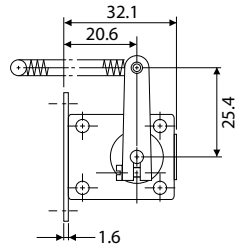
### DIMENSIONS

RS-204-5 (I)  
 RS-204-5 (II)

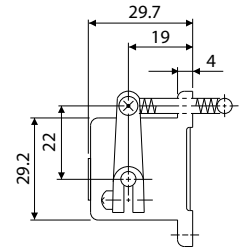
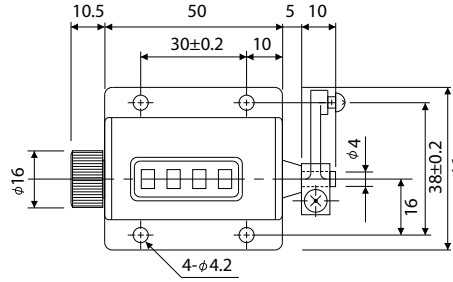


# DIMENSIONS

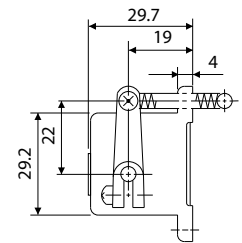
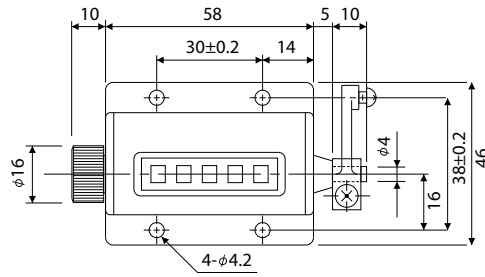
RSL-204-5 (III)  
RSL-204-5 (IV)



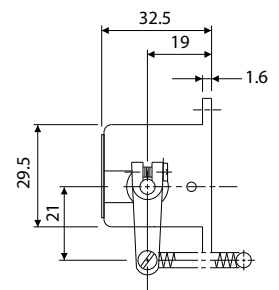
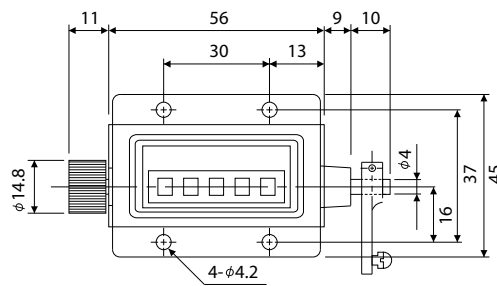
RS-4 (I)



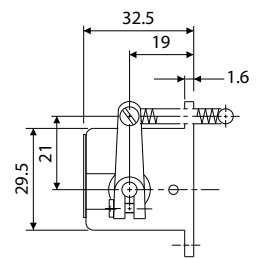
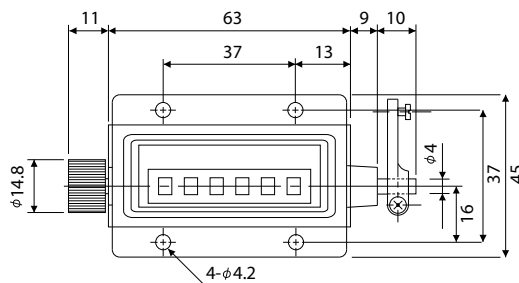
RS-5 (I)



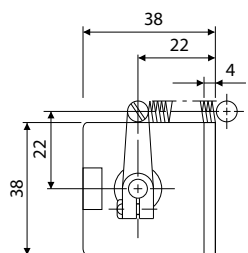
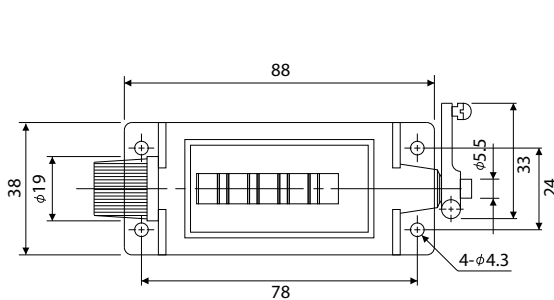
RS-5 (II)



RS-6 (I)

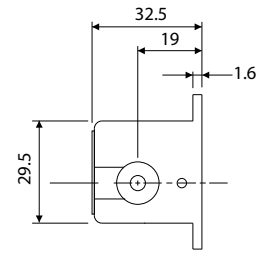
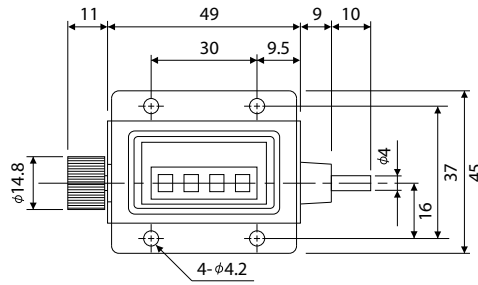


RS-303-5 (I)

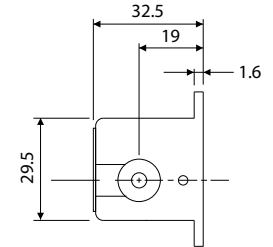
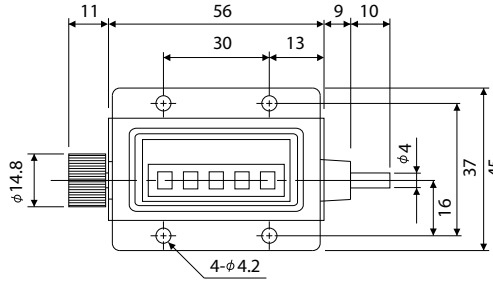


## DIMENSIONS

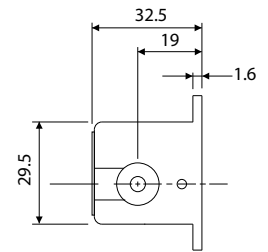
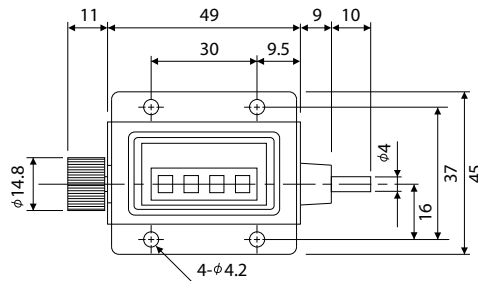
LB-4 (I)



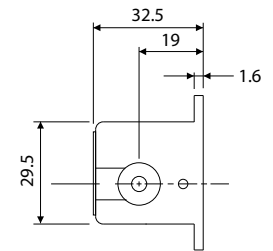
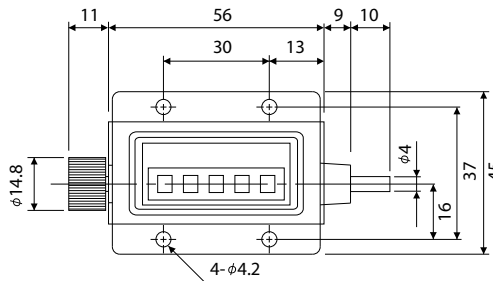
LB-5 (I)



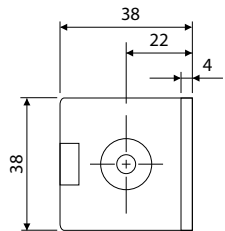
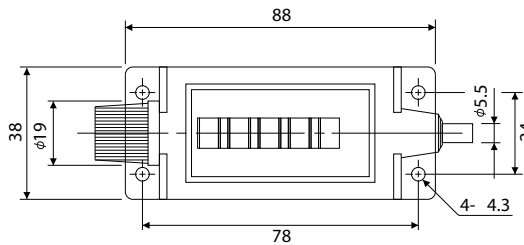
RL-4 (I)



RL-5 (I)



RL-219-5 (I)



This catalog was last revised Feb. 13, 2020.  
 \*Subject to change without prior notice.  
 All Rights Reserved, Copyright © 2020, LINE SEIKI CO., LTD.



**LINE SEIKI CO., LTD.**

Address : 37-7, Chuo-Cho, 2-Chome, Meguro-ku  
 Tokyo 152-0001 JAPAN

Contacts : Tel: +81-3-3716-5151 Fax: +81-3-3710-4552  
 E-mail: webtrade@line.co.jp

URL : <http://www.lineseiki.com>