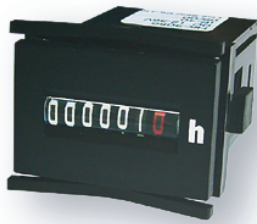


ELECTRIC HOUR METER HK-30/46/47 SERIES

RELIABLE HIGH QUALITY HOUR METER WITH CE MARKING
IDEAL FOR MONITORING AND MAINTENANCE OF MACHINES
FRONT PANEL PROTECTION IP65
RoHS COMPLIANT



HK-30 series



HK-46 series



HK-47 series

PANEL SIZE 36 x 24
COMPACT SIZE HOUR METER

DIN 48 x 48
COMPACT SIZE HOUR METER

FRONT DIMENSION ϕ 58

DIN 48 x 24 IS AVAILABLE WITH
SPECIAL FRONT PANEL

DIN RAIL MOUNT IS AVAILABLE
WITH SPECIAL ADAPTER

ALUMINIUM CLAMP MOUNTING

TYPES

TYPE	MODEL No.	SUPPLY VOLTAGE	FREQUENCY	MOUNTING	
HK-30	HK-3001	AC	110V	50Hz	Fork Clamp
	HK-3011		110V	60Hz	Fork Clamp
	HK-3021	AC	230V	50Hz	Fork Clamp
	HK-3031		230V	60Hz	Fork Clamp
	HK-3041	DC	6 - 12V	-	Fork Clamp
	HK-3051		12 - 36V	-	Fork Clamp
HK-46	HK-4601	AC	110V	50Hz	Fork Clamp
	HK-4611		110V	60Hz	Fork Clamp
	HK-4621		230V	50Hz	Fork Clamp
	HK-4631	AC	230V	60Hz	Fork Clamp
	HK-4624		230V	50Hz	Aluminium Clamp
	HK-4634	AC	230V	60Hz	Aluminium Clamp
	HK-4661		DC	6 - 30V	-
HK-47	HK-4761	DC	6 - 30V	-	Aluminium Clamp

APPLICATIONS

● Applications for AC type

- Industrial machines
- Control Panels
- Compressors
- Generators
- Pumps
- Air Conditioning

● Applications for DC type

- Agricultural equipments
- Construction equipments

ACCESSORIES

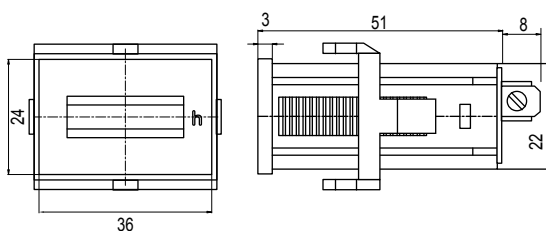
MODEL No.	
HK-46A	DIN rail adapter for HK-46 series
HK-30P	DIN 48 x 24 panel for HK-30 series

SPECIFICATIONS

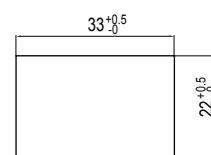
Model	AC version		DC version		
	HK-30	HK-46	HK-30	HK-46	HK-47
Power Source	110VAC, 230VAC		6-12VDC, 12-36VDC	6 to 30VDC	
Voltage Fluctuation	-10% / +10%				
Rated Current Consumption	8 mA		9 mA		
No. of digits	5 integers 2 decimals		6 integers 1 decimals		
Reading accuracy	1 / 100 hour (36 sec.)		1 / 10 hour (6 min.)		
Counting range	99999.99 hours		999999.9 hours		
Size of digit	4 mm				
Color of digit	integers: white on black		decimals : red on black		
Motor	Synchronous motor		Step motor		
Protection class	IP65 front side				
Connection	Flat pins (6.3 x 0.8 mm) with screw terminals				
Operating Temperature	-25 - +70°C	-25 - +80°C	-10 - +55°C	-20 - +70°C	-20 - +70°C

OUTER DIMENSION

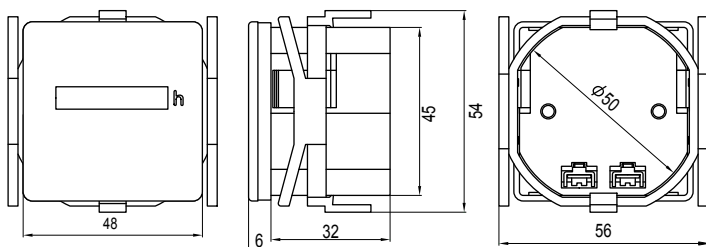
HK-30



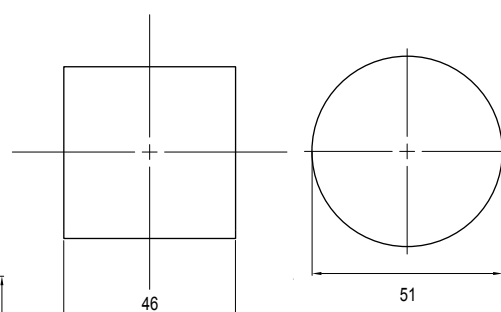
Panel cutout



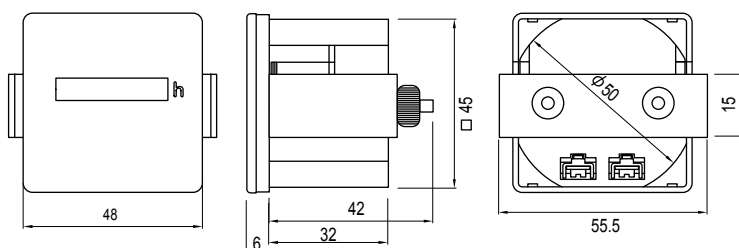
HK-46
Fork
Clamp



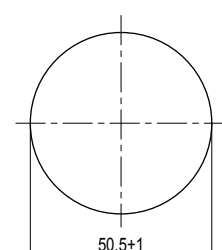
Panel cutout



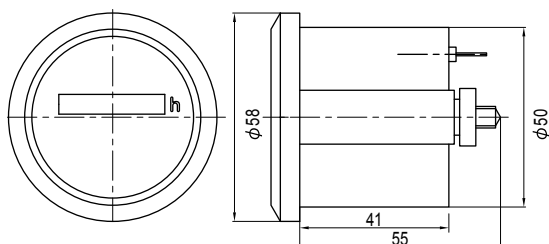
HK-46
Aluminium
Clamp



Panel cutout



HK-47



Authorized Distributor :

LINE SEIKI CO., LTD.

37-7 , CHUO-CHO 2CHOME, MEGURO-KU,
TOKYO, 152-0001
Tel.: +81-3-3716-5151 Fax.: +81-3-3710-4552
E-mail: webtrade@line.co.jp
URL: http://www.line-seiki.com

This catalog was last revised Feb 2, 2015.
*Subject to change without prior notice.
All Rights Reserved, Copyright © 2015, LINE SEIKI CO., LTD.